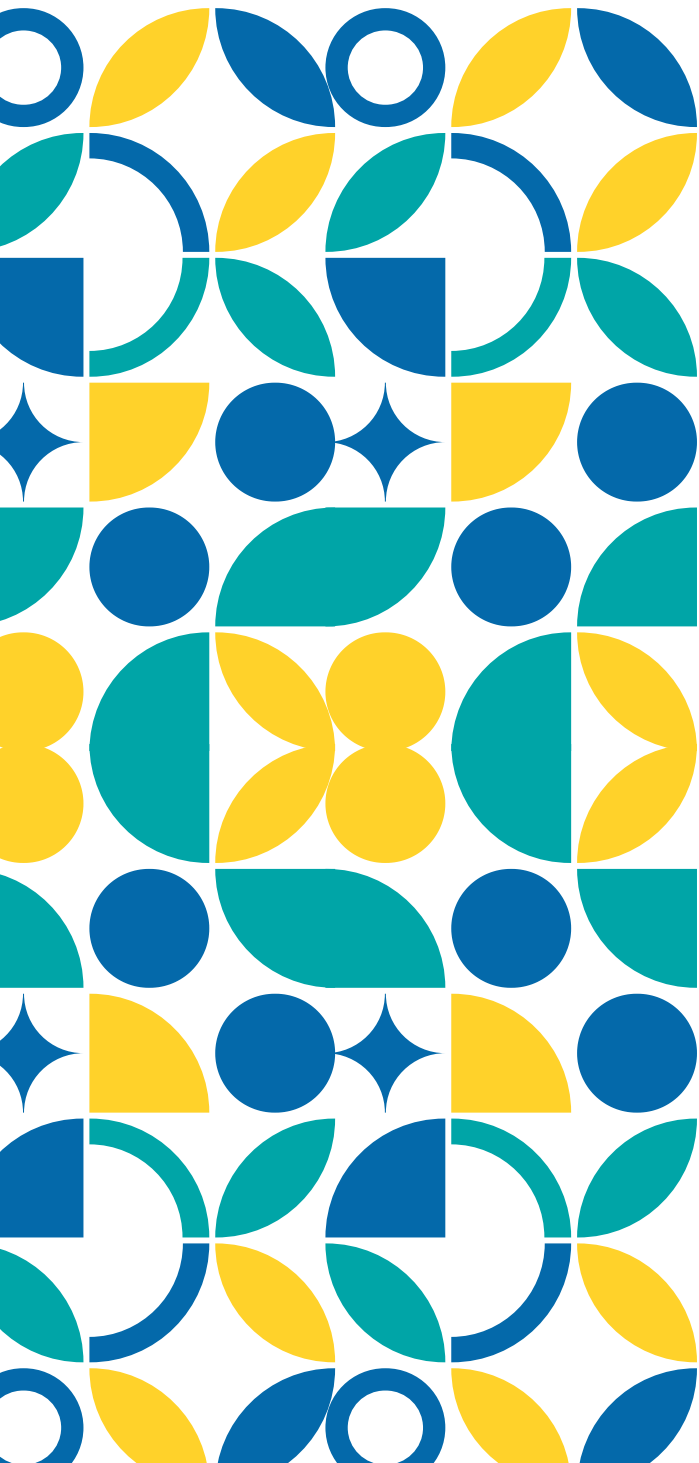




MCAULEY MINISTRIES  
LIMITED



# Annual Report

# 2025

Be pilgrims  
of hope  
and  
builders of  
peace

Pope Francis

# Table Of Contents

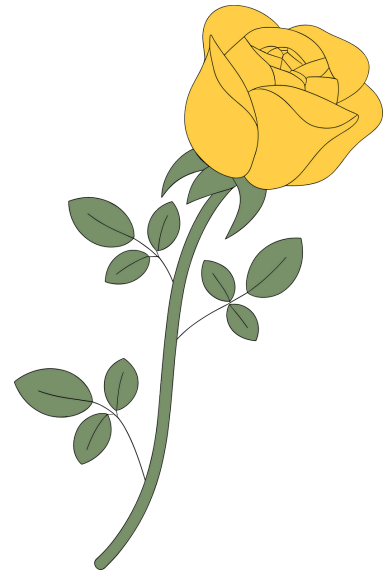


Message from the Chair	04
Message from the MML Coordinator	05
Our Mission & Vision	06
Our Values	07
Governance	08
Objectives	09
MML Overview	10
Spotlight on Ministry	11-13
Ministry Listing	14-15

# Message from the Chair

*There are things the poor prize more highly than gold, tho' they cost the donor nothing; among these are the kind word, the gentle, compassionate look and the patient hearing of their sorrows.*

*(Familiar Instructions of Rev Mother McAuley. Vincentian Press, St Louis Missouri, 1927 p.138)*



Once again it is time to reflect on and review the story of McAuley Ministries Limited (MML).

We are appreciative of the ministry being done through MML – both the individual sisters and our conference centres. Our sisters in MML provide a diversity of ministries and each day strive to ‘give expression to God’s mission of mercy’ in how they serve. In this report we read of Mary and Frances Moran and Helen Kearins – each an inspiration.

Much of the focus of the Board this past 12 months has been on the ministry centres. Each centre is continually discerning the changing needs and resources and the Institute’s need into the future. In February, we met with the Managers to explore together possibilities and to do some forward thinking within this context. Michelle Scobie from Integro Partners facilitated the process. It was a wonderful way to share our experiences and come to understand the diversity held within MML. Our thanks to each manager

for their passion and commitment to the mission through their ministry. It has been agreed that this will become an annual event.

As a Board we are deeply grateful for Jenny Hildebrandt, our MML Coordinator, who is a tireless support and advocate for those who form part of MML. She enters into relationships with each person and is always at hand to offer expertise and wisdom. The gentle prod for a 6 month report not yet sent or clear and concise advice to ensure compliance, to a phone call to ‘check in’, each is done sensitively.

Our compliance processes, including finances, are supported by Professional Services within the Institute.

I am pleased to be able to commend this Annual Report, giving account of ministry activities, compliance and financial accountability for the year 2024–2025.

Karon Donnellon RSM  
*Chair, MML Board*

# Message from the MML Coordinator

It can feel disruptive to think of a ministry's future when one is kept busy responding to the present, however preparing for tomorrow has been a focus for MML this year.

*Being aware that the future is created by what we do today, allows us to consider the legacy we wish to leave when the ministry we provide changes.*

It empowers us to consider strategies for transitioning out of our ministry that reflect the care we have for those in our community we minister to.

With long term strategic/ministry plans for centres concluding early this year it was timely for the managers to gather, to hear from the Institute Leadership Team, in their role as MML Board, and to begin to discern how their ministry might evolve in the following months and years, particularly within the context of the needs of the Institute.

Throughout this year, I have appreciated hearing from both Centre Managers and individual Sisters, to better understand their ministries. Often our conversations, or the 6 monthly reports, identify a gap in compliance or an opportunity to embed additional

supports, and we work together to find a solution.

Working through these processes is never as daunting as it may initially seem and has resulted in Sisters being able to safely and confidently continue in their ministry.

MML continues to benefit from the expertise within ISMAPNG Professional Services, for which I am most grateful. I particularly wish to acknowledge the outstanding contribution from Sarah McNeil in the finance team. Sarah provides timely and thorough financial services for all MML ministries, and I know that Sisters appreciate her responsiveness to any queries they might have.

As always, it has been a privilege to work with, and provide support to, the Sisters and employees of MML throughout this very busy year.

Jenny Hildebrandt  
*MML Coordinator*



# MML Mission & Vision



## Mission

The Board of McAuley Ministries Ltd (MML) exercises governance for the formal non incorporated ministries of the Institute of the Sisters of Mercy Australia and Papua New Guinea (ISMAPNG or The Institute).

The Board seeks to govern, empower and enable those ministries in the provision of excellent, professional services.

---

## Vision

The people and ministries in MML give expression to God's mission of mercy. The ministries enhance the quality of life of those who are served.

Sisters and lay people within MML serve with a strong sense of purpose, confident that they contribute to the larger reality of mercy mission.

Under the McAuley Ministries Ltd banner, Sisters and partners in Mercy provide a wide range of services that are truly spiritual and corporal works of mercy in today's world.

Those receiving the services of MML are:

- Ministering as educators, managers, consultants, writers, researchers, musicians, bioethicists, environmentalists, ecologists and advocates for justice.
- Providing counselling, psychological therapy, chaplaincy, pastoral supervision, mediation, retreats, spiritual direction and facilitation.
- Supporting rural communities
- Offering hospitality in retreat, spirituality and heritage centres.
- Teaching music, speech and drama.

# Our Values



**Hospitality**

**Excellence**

**Diversity**

**Compassion**

**Respect**



**Justice**



# Governance MML Board of Directors



Directors serving during the current reporting period:

Karon Donnellon RSM (Chair)

Elizabeth Moloney RSM

Margaret Madden RSM

Duyen Nguyen RSM

Theresia Tina RSM

## Compliance

The MML Board met six times in the 2024-2025 financial year.

All compliance requirements with ASIC and ACNC have been met. Risk and safeguarding policies are firmly in place.

The financial viability of the Company is guaranteed by the Institute. The Directors consider carefully and in detail the financial reports. The Board provides an annual budget to fund each of its ministries and its operations.

The Members re-appointed ShineWing Auditors for the 2024-2025 financial year

The completed Financial Audit Report is available on request.





# MML Objectives



- 1** Ministries receiving the services of MML are living expressions of the mission of ISMAPNG (the Institute) to embody God's mission of Mercy in today's changing world
- 2** The organisation retains its flexibility in responding to the developing needs and demands of the Institute and the world
- 3** All ministries within MML offer professional, quality services
- 4** Each site-based ministry within MML is well managed, accountable to MML and moves through its life cycle in a way that is appropriate to the ministry and to the people it serves
- 5** Processes of communication and compliance are constantly reviewed to facilitate and ensure effective coordination and interaction between the Institute and MML.

# MML

## Ministries Overview



At 30 June 2025 there are 34 ministries receiving the services of MML, in which 33 Sisters are engaged and an additional 39 people employed.

Of the sisters, 28 are engaged in full or part-time individual ministry, one manages a centre which employs professional staff (music teachers) and four manage centres where support staff are employed.

Of the employees, one manages a ministry centre and the remaining 38 employees include music teachers, support staff working in administration, program development, guest services or as cleaners, gardeners/maintenance staff or cooks. The employment status of these employees is as follows: 4 full time, 8 part time and 26 casual.

There are, as well, 30 volunteers who provide invaluable support at St Catherine's House of Hospitality, Tuart Hill.

As of 30 June 2025, five ministry centres, one music academy and one speech and drama centre were supported by MML. These are Mercy Hub (Carlton, VIC), St Catherine's House of Hospitality (Tuart Hill, WA),

Santa Casa Retreat Centre (Queenscliff, VIC), Star of the Sea Guest House (Apollo Bay, VIC), Seville Mercy Centre (Cairns, QLD), Maclean Music Academy (Maclean, NSW) and the Magic House (Townsville, QLD).

Sisters work from a variety of settings including from Institute owned premises, parishes, online or as visiting facilitators at other premises.

The McAuley Ministries Limited Administration Office located at Stanmore, NSW, is staffed 4 days per week by MML Coordinator, Mrs Jennifer Hildebrandt.

Support services are provided by staff of the Institute of the Sisters of Mercy and Papua New Guinea (ISMAPNG) from the offices in Alphington, Victoria, including comprehensive financial services provided by Mrs Sarah McNeil.

*Details of ministries are to be found on pages 14 and 15*

# Spotlight on Ministry

*Sisters Frances and Mary Moran live in Northern NSW and belong to the Central B Community. As active members of their community, they have experienced the challenges of extreme weather events, particularly the floods, and witnessed the strength and joy of humanity. Here they reflect on moments that were a highlight for them in their particular ministries.*



from the Morans' garden

My special moment was the recent gathering of chaplains from this area.

Each person was asked to share something of their chaplaincy ministry. It was a heart warming and encouraging privilege to hear each person's contribution to the people of this area. Because the chaplaincy is sponsored by the Uniting Church, many of those involved belong to that community. However these are healthily balanced by many members of other faith communities.

The work of the Holy Spirit is evident in the totally respectful way the chaplains engage together, focusing on the need of the people we encounter so that they may experience the healing, mercy and compassion of Jesus.

*Frances Moran RSM*

It has been wonderful to witness the joy of a 76 year old man who has now started to learn to play the piano. He has always wanted to play and his ambition to learn increased when he watched and listened to the Series 'The Piano'.

He is excited every lesson to be learning more and more about playing the piano and doing the theory of music. His wife is very happy that he has a new project to be working on as he has already written several books and built a miniature railway.

Whether he will make the stage with his piano performance is something yet to unfold!

*Mary Moran RSM*

# Spotlight on Ministry

*Sr Helen Kearins works in the area of Pastoral Supervision and Facilitation, however she also draws on her creativity in the areas of music and writing. Through MML, Helen is working to leave a legacy of music that will be appreciated well into the future.*

*Here Helen shares a little of her journey.*

A new and exciting development for me in MML has been receiving funding for my music activities – which is more than just the funding – it is a recognition of my music making as Ministry.

The first song I wrote was in 1984, as part of a course, Arts Justice and Communication at NPI (National Pastoral Institute). Since then I have written songs for conferences, a wedding, my mother's 80<sup>th</sup> birthday, Mercy and various social justice issues, especially relating to Indigenous people.

Writing songs was a sideline to my full time employment. Since I didn't have training, I sometimes had friends write the music to songs that were in demand. During that time I was able to record a cassette tape (1991) and a CD (2010.)

Following the 'resurrection' of some of my songs at the 2023 Chapter, I was encouraged by some Mercy sisters to 'do something' with my music!

This has boiled down to, getting the music to my songs available in print, making them available in a digital format and re-recording some of the songs.

The first of these, the printed music, is in progress with the assistance of a lecturer from the ANU School of Music and one of the students doing the laborious work of transcribing songs without written music. All will then be formatted on computer and able to be made available.

Some songs are already in MP3 format. Further work is needed re getting all songs into digital format and deciding where and how these can be made available. As earlier recordings were low budget and of variable recording standard, some songs need to be re-recorded.

And the question for both print and digital format is how they might be income generating!



The *then and there*,  
two buds of  
possible  
exploration of  
a practitioner's  
experience.

The what and  
who and  
wherefore.  
content - what  
happened?

The strategies  
and  
interventions;  
bringing the  
work into the  
room in the  
memory and  
relating  
of what was said and done.

The feel of it ..  
The  
relationship  
between  
practitioner  
and client.

Into the space of deeper reflection.  
The *Here and Now*  
the impact of the client on the practitioner  
...wondering..

Listening to  
more than the  
story, attuned  
to the scent,  
aware of the impact on me

What has been  
stirred in me?  
What do I do  
with this?  
When and where?  
A thing of beauty.



*An extract from a Reflection Sr Helen Kearins wrote during her training in Supervision with the Institute of Pastoral Supervision and Reflective Practice UK. It expresses, for her, the richness of Supervision – given and received.*

# MML Ministries

## Individual Ministries

Name	Ministry	Registered Trading Name
Sr Margie Abbott	MML Igniting Sparks; Psychodrama; Supervision; Spiritual Direction and Integral Ecology Retreats	Igniting Sparks
Sr Carole Carmody	Spiritual Direction; Retreats	
Sr Roslyn Carr	Clinical psychologist and consultant in private practice; Pastoral Supervision	
Sr Karon Donnellon	Facilitation & Change Management including Organisational Consultations & Formation facilitations; Spirituality	
Sr Madeline Duckett	Retreats; "Together in Mercy"; Spiritual Direction; Coordinator of website <i>Contemplative Evolution Network</i>	
Sr Marg Endicott	Leadership and Organisational Development Facilitator and Consultant	
Sr Lizzie Finnerty	Manager: Santa Casa Retreat Centre, Queenscliff	Santa Casa Retreat Centre
Sr Theresa Foley	Spiritual Direction; Pastoral Care and Social Services	
Sr Anne Gallagher	Music therapist; Music Tuition; Manager of Maclean music academy	Maclean Music Academy
Sr Gwen Garland	Administration Support: Along the Murray Psychology Services	Along the Murray Psychology Services
Sr Helen Glasheen	Spiritual Direction	
Sr Kerry Gordon	Education: Speech and Drama Centre	The Magic House
Sr Pat Healion	Ambulance Volunteer & Disaster recovery Chaplain; Researcher & Writer	
Sr Adele Howard	Ecological theology and communications Advisor and Producer	
Sr Anila Isaac	Spiritual Direction	
Sr Helen Kearins	Facilitator; Sociodramatist; Pastoral Supervision; Musician	
Sr Trudy Keur	Consultancy; Professional Supervision; Mentoring, Education	
Sr Gaye Lennon	Spiritual Direction, Facilitation and Community Development	
Sr Margaret McGrath	Manager: Star of the Sea Guest House	Star of the Sea Guest House
Sr Anne McGuire	Pastoral Supervision; Advocacy	
Sr Margaret Moore	Manager: Mercy Hub and Spirituality Centre	Mercy Hub and Spirituality Centre

# MML Ministries

## Individual Ministries

Name	Ministry	Registered Trading Name
Sr Frances Moran	Psychologist; Music Tuition; Chaplain	
Sr Mary Moran	Music Tuition; Chaplain	
Sr Carmel Muir	Ministry Assistant - Along the Murray	
Sr Mai Nguyen-Doan	Spiritual Companion	
Sr Elizabeth Nicholls	Manager: St Catherine's House of Hospitality	St Catherine's House of Hospitality
Sr Ann-Maree O'Beirne	Spiritual Direction, Retreat Director; Theologian; Communications Consultant; Eco Spirituality	
Sr Caroline Ong	GP: Medical practitioner; Consultant Bioethics & Theological Ethics	
Sr Nicole Rotaru	Workshops: Spirituality of Aging; Domestic Violence; Trauma Healing and Consultation	
Sr Liz Rothe	Spiritual Companion; Accompaniment	
Sr Cathy Solano	Spiritual Direction; Pastoral Supervision; Interculturality; Program Coordination - Star of the Sea Apollo Bay & Santa Casa	
Sr Noella Sullivan	Spiritual Direction	
Sr Patricia Weekes	Psychology Services - Child and Adolescent psychotherapy, Adult Mental Health	Along the Murray Psychology Services

## Ministry Centres

**Maclean Music Academy**  
 Sr Anne Gallagher  
 2 McIntyres Lane, Maclean , NSW

**The Magic House**  
 Sr Kerry Gordon  
 95 Eyre Rd, Townsville

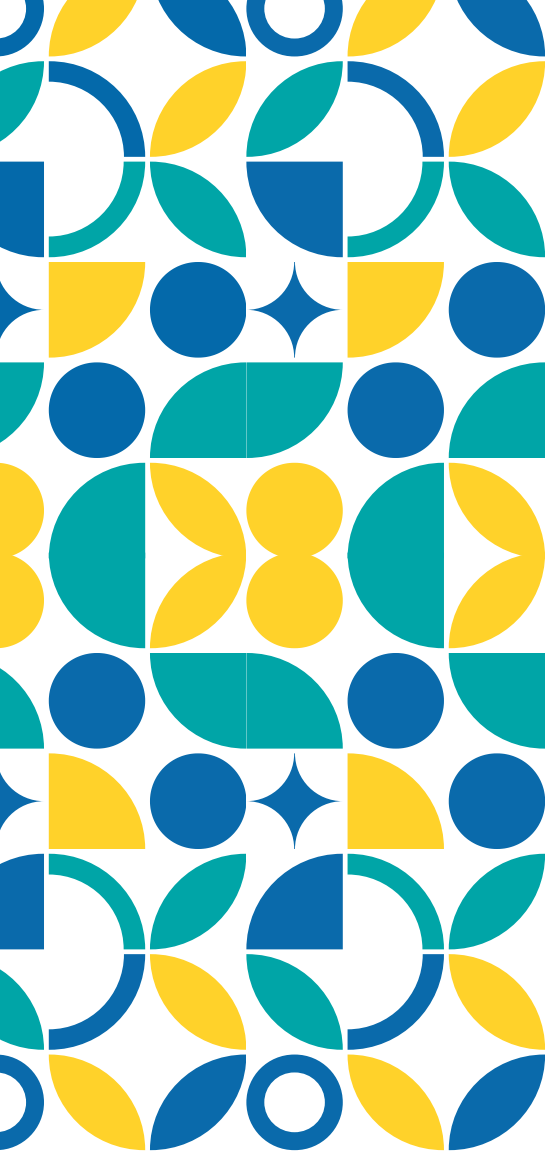
**Mercy Hub & Spirituality Centre**  
 Sr Margaret Moore  
 607 Nicholson St, Carlton North, VIC  
[www.mercyhub.org.au](http://www.mercyhub.org.au)

**Seville Mercy Centre**  
 Mr Rod Cole-Clarke  
 35 Bauhinia Ave, Earville, QLD  
[www.seville.org.au](http://www.seville.org.au)

**St Catherine's House of Hospitality**  
 Sr Elizabeth Nicholls  
 113 Tyler St, Tuart Hill, WA  
[www.stcatherineshospitality.org.au](http://www.stcatherineshospitality.org.au)

**Star of the Sea Guest House**  
 Sr Margaret McGrath  
 61 Noel St, Apollo Bay, VIC  
[staroftheseaapollobay.org.au](http://staroftheseaapollobay.org.au)

**Santa Casa Retreat Centre**  
 Sr Lizzie Finnerty  
 33-35 Flinders St, Queenscliff, VIC  
[santacasa.org.au](http://santacasa.org.au)



pastoralcare workshops  
**spiritualdirection**  
theology ecology retreats speech  
facilitation chaplaincy  
supervision drama psychology  
administration music management consultancy



**MCAULEY MINISTRIES  
LIMITED**



Ph +61 2 9123 7224



<https://institute.mercy.org.au>



[mcauleyministries@ismapng.org.au](mailto:mcauleyministries@ismapng.org.au)



Institute Centre - Stanmore  
33 Myrtle Street  
Stanmore NSW 2048