

GOVERNANCE LEADERSHIP FORMATION

Session 3 – Moving forward to the establishment of Mercy Ministry Companions



INSTITUTE OF
SISTERS *of* MERCY
OF AUSTRALIA & PAPUA NEW GUINEA

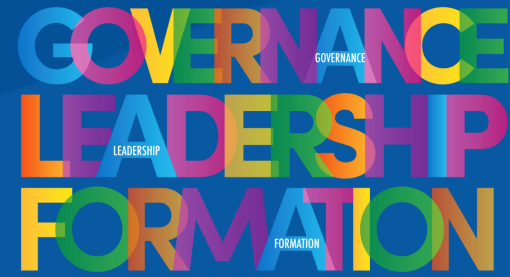
Jonathan Campton

Online Governance Forum, July 2021



INSTITUTE OF
SISTERS of MERCY
OF AUSTRALIA & PAPUA NEW GUINEA

Introduction

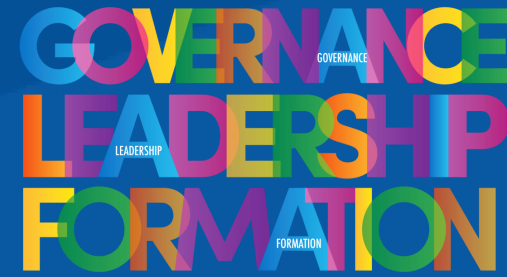


1. Structure
 - Canonical Structure
 - Civil Structure
2. Roles
3. Other associated Church Entities
4. Transition
 - *Evolving journey*



INSTITUTE OF
SISTERS of MERCY
OF AUSTRALIA & PAPUA NEW GUINEA

Journey towards Mercy Ministry Companions

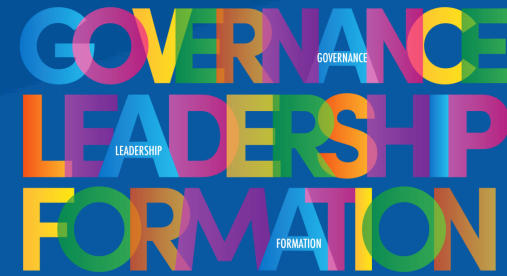


- The Institute of the Sisters of Mercy Australia and Papua New Guinea (the Institute) agreed at Chapter in 2017 to explore future governance structures to ensure its ministries flourish
- The Institute has decided to petition Rome for a new Ministerial Public Juridic Person (PJP) called Mercy Ministry Companions
- The Institute agreed that Mercy Ministry Companions will govern ministries in three groupings of Health, Education and Community Services from 3 December 2021



INSTITUTE OF
SISTERS of MERCY
OF AUSTRALIA & PAPUA NEW GUINEA

Mercy Ministry Companions as a Canonical Structure

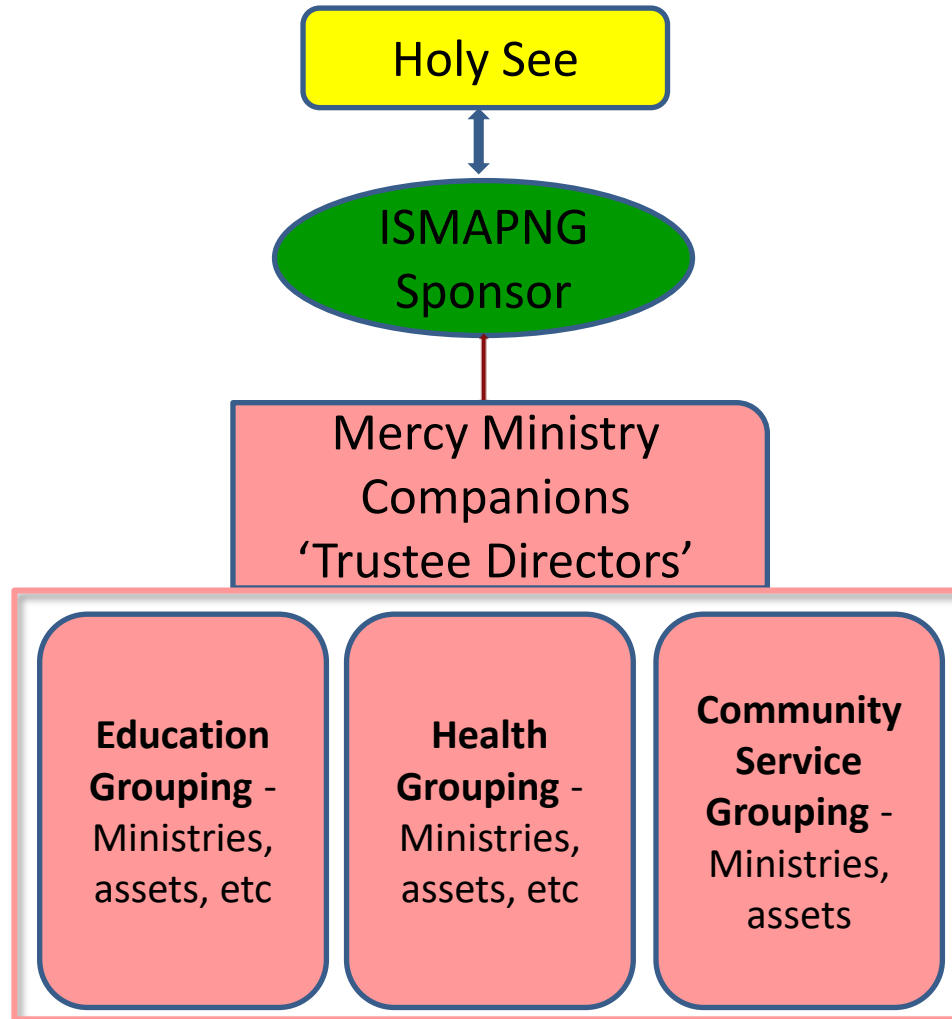


Ecclesial
authority

Institute
Leaders

MPJP
Trustees
Board

MPJP
assets



Establishes
PJP

'Sponsors'
the PJP

Governs the
ministries and
assets

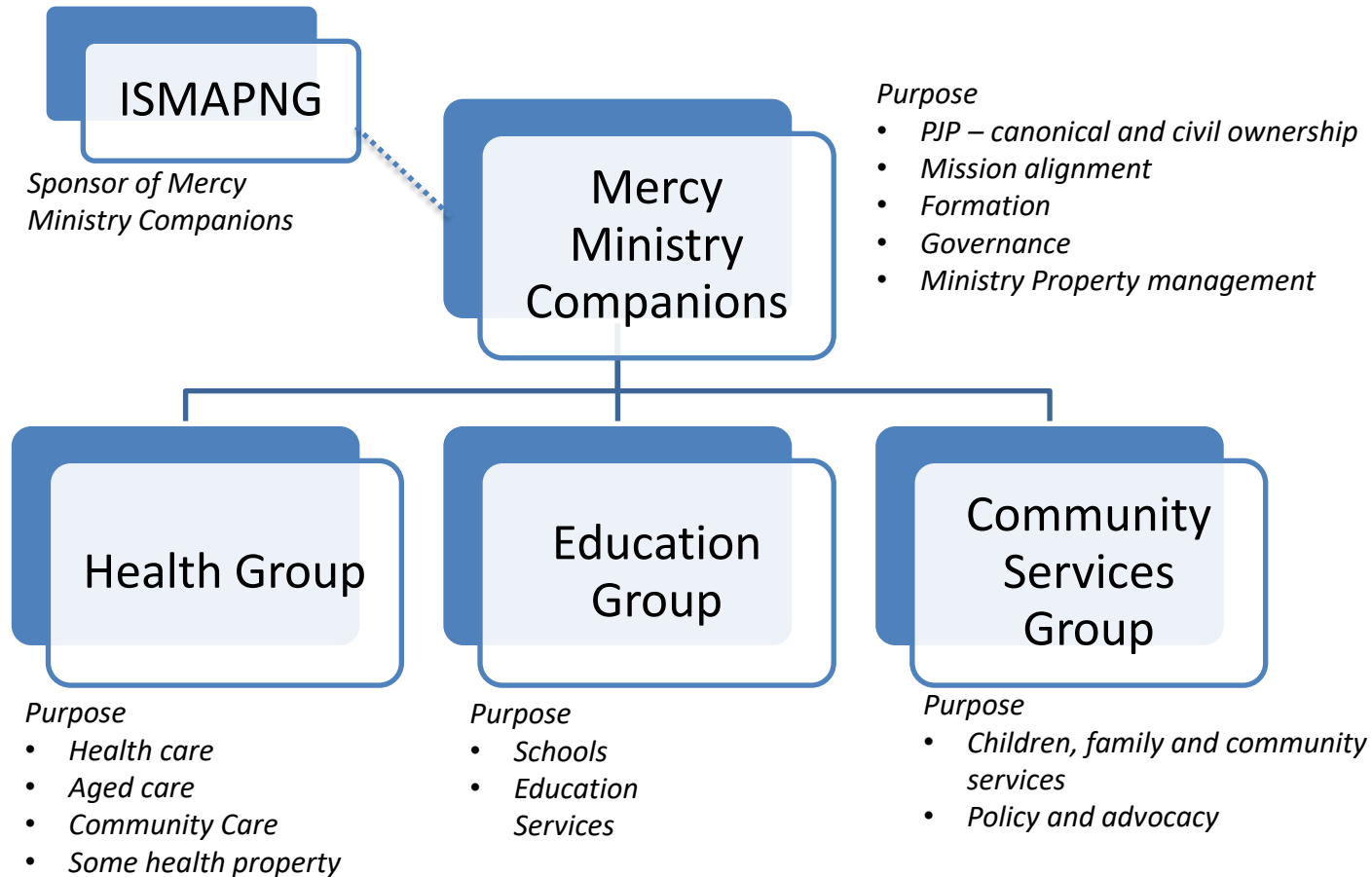
Do the work



INSTITUTE OF
SISTERS of MERCY
OF AUSTRALIA & PAPUA NEW GUINEA

Mercy Ministry Companions as a Canonical Structure

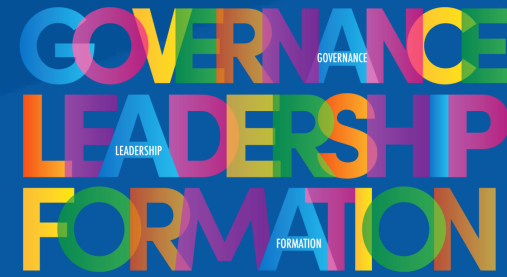
GOVERNANCE
LEADERSHIP
FORMATION



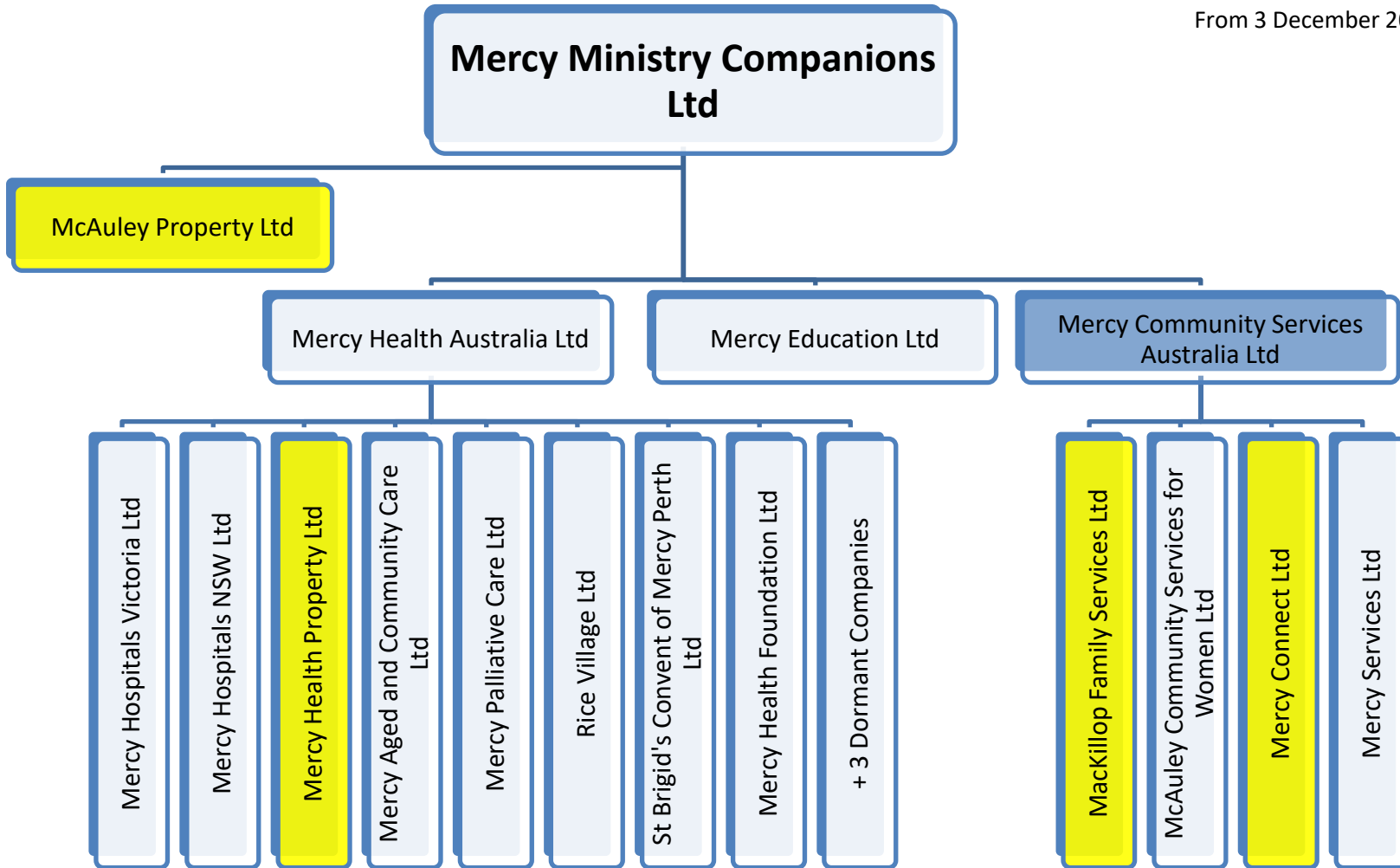


INSTITUTE OF
SISTERS of MERCY
OF AUSTRALIA & PAPUA NEW GUINEA

Mercy Ministry Companions as a Civil Structure



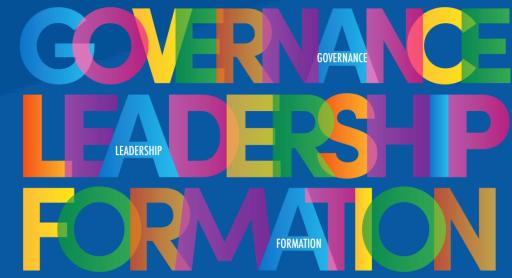
From 3 December 2021





INSTITUTE OF
SISTERS of MERCY
OF AUSTRALIA & PAPUA NEW GUINEA

Roles



SPONSOR = ISMAPNG (Article 3.1)



INSTITUTE OF
SISTERS of MERCY
OF AUSTRALIA & PAPUA NEW GUINEA



Institute Leader



Institute Councillor



Institute Councillor



Institute Councillor



Institute Councillor

SPONSORS REPRESENTATIVES GROUP (Article 3.4)



Chair



+

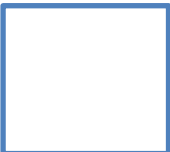
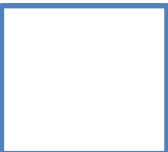
TRUSTEE DIRECTORS (COUNCIL) (Article 5)



Chair



MINISTRY DIRECTORS (BOARD)



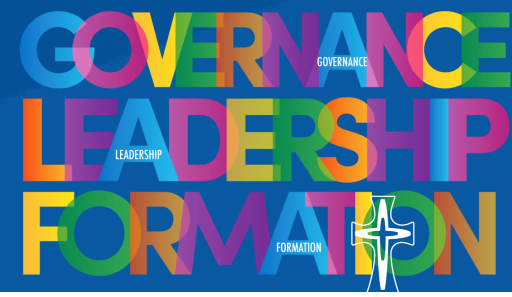
+

Chair



INSTITUTE OF
SISTERS of MERCY
OF AUSTRALIA & PAPUA NEW GUINEA

Roles



Mercy Community Services Australia Ltd (Transition Board)



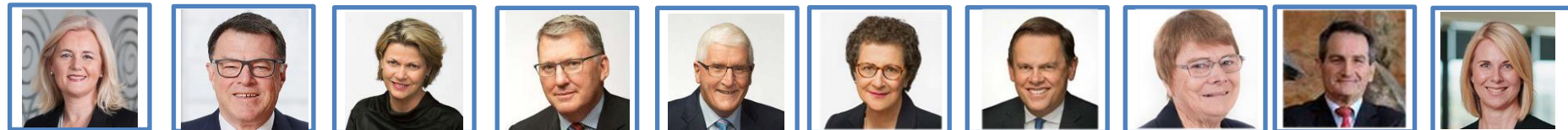
Chair

Mercy Education Ltd



Chair

Mercy Health Australia Ltd

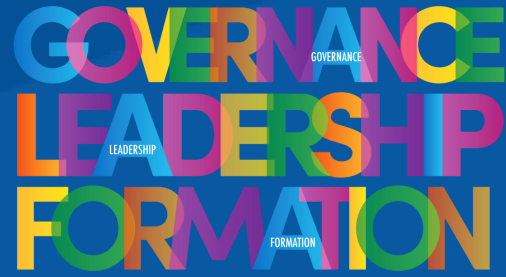


Chair



INSTITUTE OF
SISTERS of MERCY
OF AUSTRALIA & PAPUA NEW GUINEA

Other associated Church entities

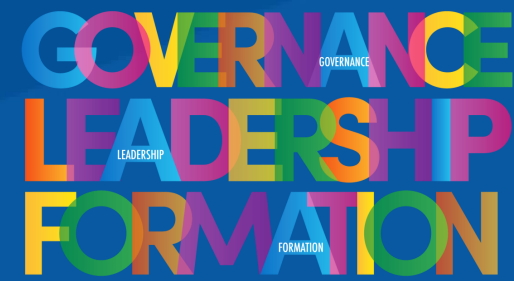


- Institute and its remaining ministries including:
 - Mercy Works Ltd;
 - McAuley Ministries Ltd; and
 - Catherine McAuley Services Ltd
- Mercy International Association
- Sisters of St Joseph and Christian Brothers
- Australian Catholic Bishops' Conference
- Catholic Health Australia
- Catholic Social Services Australia
- Catholic education groups
- AMPJP



INSTITUTE OF
SISTERS of MERCY
OF AUSTRALIA & PAPUA NEW GUINEA

Other associated MPJPs



Mercy MPJPs



Whānau Mercy Ministries

Other Australian MPJPs



EDMUND RICE EDUCATION
AUSTRALIA



Good
Samaritan
Education



MARY
AIKENHEAD
MINISTRIES



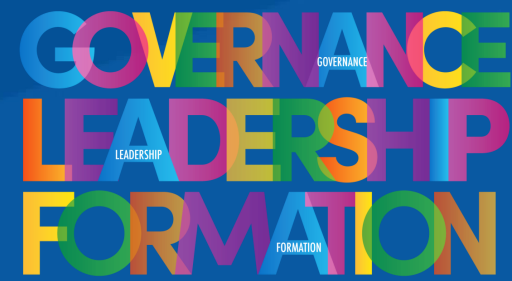
ST JOHN OF GOD
Health Care



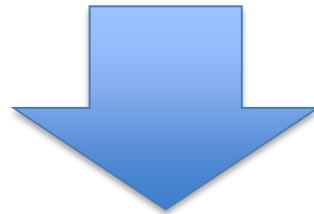


INSTITUTE OF
SISTERS of MERCY
OF AUSTRALIA & PAPUA NEW GUINEA

Transition



1 July – Directors Mercy Ministry Companions Ltd

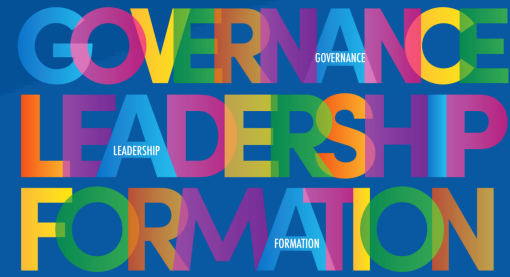


3 December – Trustee Directors of Mercy Ministry Companions



INSTITUTE OF
SISTERS *of* MERCY
OF AUSTRALIA & PAPUA NEW GUINEA

Papers

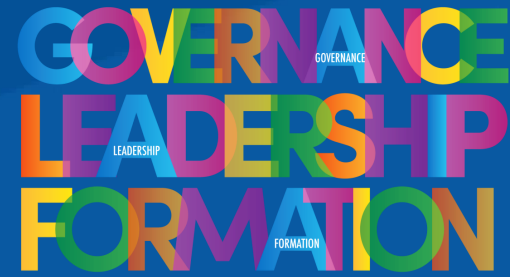


- Canonical Statutes of MMC
- Civil Constitution of MMCL
- Constitution of Ministry Companies
- Charter
- Policies (eg Appointments and remuneration of Directors)



INSTITUTE OF
SISTERS of MERCY
OF AUSTRALIA & PAPUA NEW GUINEA

Reserve Powers

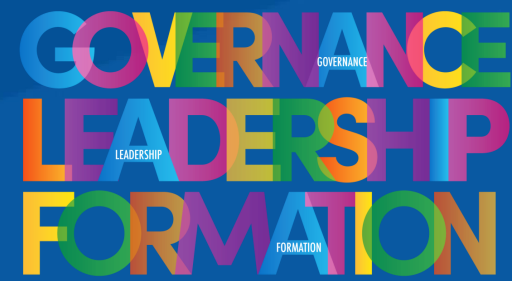


- Cascading Reserve Powers
 - Holy See to Sponsors
 - Sponsors to Trustee Directors
 - Trustee Directors to Ministries
- Limits and conditions
- Bishops
- Alienation of temporal goods belonging to the stable patrimony



INSTITUTE OF
SISTERS of MERCY
OF AUSTRALIA & PAPUA NEW GUINEA

Exercising Stewardship

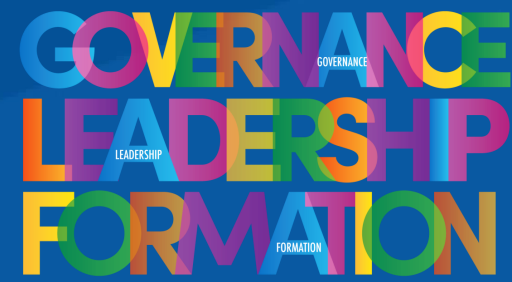


The Institute exercises its stewardship in the following ways:

- Reserve Powers and 'Decision Requests'
- Property matters (commonly with MPL as landlord)
- Receipt of Minutes of Ministry Companies
- Visits to Ministries
- Assigning an ILT member to each ministry (Portfolios)
- Governance Forum and Formation events
- AGMs and APMs



INSTITUTE OF
SISTERS of MERCY
OF AUSTRALIA & PAPUA NEW GUINEA



*How might Mercy Ministry Companions exercise
its stewardship of its ministries?*