



Information Sheet: **Bokashi One Composter**

January 2021

As part of our ongoing commitment to Laudato Si' and to achieve our goals that are set out in our Environmental Management Plan, the Institute is providing one Bokashi Bin to interested sisters.

The Bokashi One composting is an eco-friendly composting system designed to be used in the kitchen.

The system is comprised of a Bokashi One Bucket and Bokashi One Mix which work together to eliminate the odours and unpleasantness associated with putrefaction and decay.

How does it work?

This bucket accelerates the composting process so that the scraps ferment and reduce in size. The bucket has a grate at the bottom and an airtight lid to keep out bugs and help the fermenting process. Every time you add a layer of scraps sprinkle Bokashi One mix over the top. Also regularly drain the juice out of the bottom - this is good for the garden. Once the bin is full bury it in your garden to fully compost or put it into an outdoor composter.

The Bokashi Mix contains microorganisms that ferment the food scraps.

The juice produced is very acidic but a great fertilizer. Use in the garden but ensure it is diluted at a 100:1 ratio. It can be used undiluted as a drain cleaner.

- Composter Capacity: 20 litres
- Bucket Dimensions: 41cm high, 31cm width, 30cm deep
- Use with the Bokashi Mix
- Full instructions included

Bokashi make composting easy at home and is Australian owned.



What can I compost?

Just about all kitchen waste, (which is a huge benefit of Bokashi One composting over worm farms or traditional composting), although it's best to avoid large bones and excessive amounts of liquid.

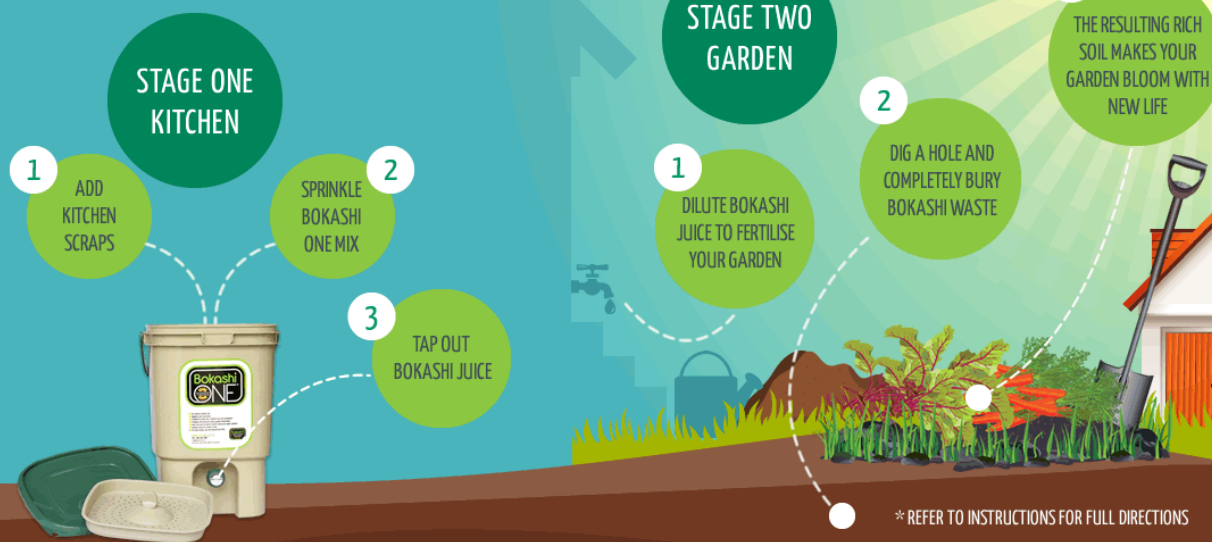
- fruit and vegetables
- prepared foods
- cooked and uncooked meats and fish
- dairy
- eggs
- bread
- coffee grinds
- tea bags
- wilted flowers and tissues

Questions?

Contact Chris Hill, Environmental Sustainability Manager, at chris.hill@ismapng.org.au or 0410 498 927.

More information over the page ...

How Does The Bokashi One System Work?



Step-By-Step Guide To Composting With Bokashi One

1. Position the plastic grate on the ledge near the bottom of the bucket with the knob upright. Make sure the tap is in the off position.
2. Place your kitchen waste in the bucket and sprinkle a handful of Bokashi One Mix over every layer of waste. As a guide, use approximately 1 tablespoon of mix for every cup of waste. Use more Bokashi One Mix when adding high protein foods, eg meat, fish, cheese and eggs.
3. Check that the lid is closed tightly at all times.
4. Regularly drain the Bokashi juice produced using the tap at the base of the bucket.
5. Repeat this layering process until the Bokashi One bucket is full.
6. Once full, the waste is ready to be buried.
7. If you have two Bokashi One buckets, begin the process again in your second bucket, allowing the contents of the first bucket to continue to ferment. Continue to drain off the bokashi juice regularly.
8. Wash your Bokashi One bucket after each use.

Note: the waste does not break down in the bucket; it is fermenting and will reduce in volume as it loses water content. Complete breakdown of the waste and the composting process occurs when it is buried in the soil.

Frequently Asked Questions

Does the Bokashi One bin smell? No. As long as the lid is on tightly and the tap is turned off.

What if I have mould growing in the bin? If you have white mould growing in your Bokashi One bucket, this is actually a fungi and is a good sign. More of this white fungi is produced when conditions are warm. White fungi is a sign that the waste is fermenting rather than putrefying, which is what is supposed to happen in the Bokashi One composting system.

If you see green/blue/black/grey mould, this is actually a sign of putrefaction, which is not what should be happening. If your waste is putrefying rather than fermenting, it means that you may need to add more Bokashi One Mix.

Can I store my Bokashi One bin outside? Yes, this shouldn't be a problem, so long as you ensure that it is kept in the shade and away from direct sunlight. You also need to ensure that pets or other animals can't disturb it or knock the bin over.

Do I have to wait until the bin is full before I empty it? No, you can empty the bin as often as you like.

Where can I buy the Bokashi One Mix? The Mix can be purchased online at a number of places including direct from Bokashi Composting Australia: www.bokashi.com.au. To find other sources, just enter 'Bokashi One Mix' into your search engine.